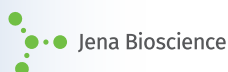
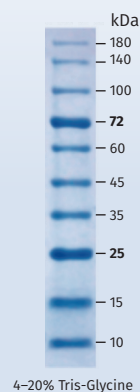


## Protein MW Marker

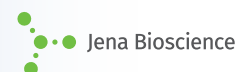
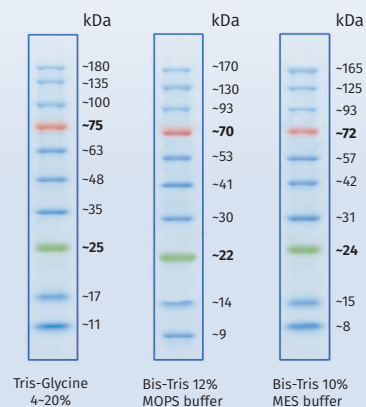
Our **Prestained Molecular Weight Marker** are supplied in ready-to-load format containing gel loading buffer. There is no need to heat, dilute or add reducing agents before loading.



### BlueClassic

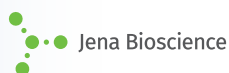
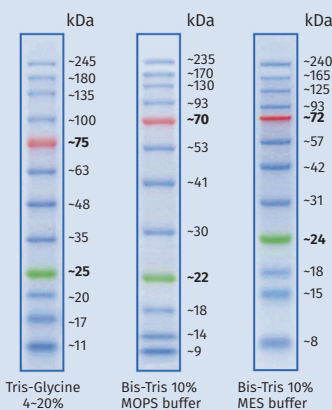


### BlueRay

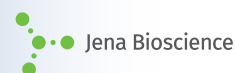
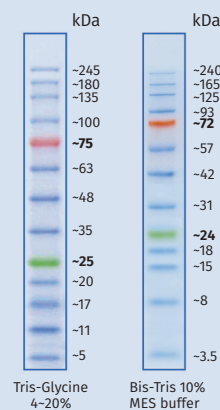


With their distinct reference bands and single-/multi-colored formats prestained protein marker allow easy tracking and quantification of protein samples in a range of 5 to 245 kDa.

### BlueEye



### BlueElf



Product	Cat.-No.	Size	Amount
<b>BlueClassic Prestained Protein Marker</b>	PS-107	10 – 180 kDa	2×250 µL
<b>BlueRay Prestained Protein Marker</b>	PS-103	10 – 180 kDa	2×250 µL
<b>BlueEye Prestained Protein Marker</b>	PS-104	10 – 245 kDa	2×250 µL
<b>BlueElf Prestained Protein Marker</b>	PS-105	5 – 245 kDa	2×250 µL

