

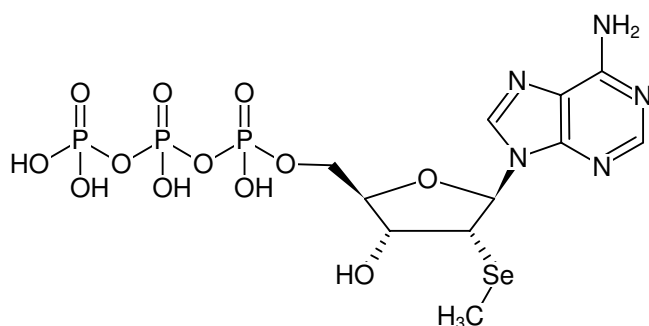
**2'MeSe-ATP**

2'-Methylseleno-adenosine-5'-triphosphate, Sodium salt

Cat. No.	Amount
NU-928-1	1 mg

Selected References:

Malley *et al.* (2018) The structure of iPLA₂β reveals dimeric active sites and suggests mechanisms of regulation and localization. *Nat. Commun.* **9** (1):765.



Structural formula of 2'MeSe-ATP

For general laboratory use.**Shipping:** shipped on gel packs**Storage Conditions:** store at -20 °C

Short term exposure (up to 1 week cumulative) to ambient temperature possible.

Shelf Life: 6 months after date of delivery**Molecular Formula:** C₁₁H₁₈N₅O₁₂P₃Se (free acid)**Molecular Weight:** 584.17 g/mol (free acid)**Exact Mass:** 584.93 g/mol (free acid)**Purity:** ≥ 95 % (HPLC)**Form:** solid**Color:** white to off-white**Spectroscopic Properties:** λ_{max} 259 nm, ε 15.4 L mmol⁻¹ cm⁻¹ (Tris-HCl pH 7.5)