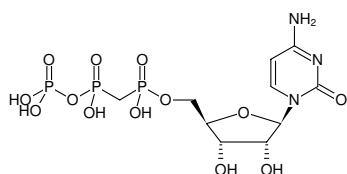


**CpCpp**

(CMPCPP)

Cytidine-5'-[( $\alpha,\beta$ )-methylene]triphosphate, Sodium salt

Cat. No.	Amount
NU-438S	100 $\mu$ l (10 mM)
NU-438L	5 x 100 $\mu$ l (10 mM)

**Specific Ligands:**Tubulin<sup>[1]</sup>**Selected References:**Lass-Napiorkowska *et al.* (2016) Real-Time Observation of Backtracking by Bacterial RNA Polymerase. *Biochemistry* **55** (4):647-58.Heald *et al.* (1996) Self-organization of microtubules into bipolar spindles around artificial chromosomes in *Xenopus* egg extracts. *Nature* **382**:422.

Structural formula of CpCpp

**For research use only!****Shipping:** shipped on gel packs**Storage Conditions:** store at -20 °C

Short term exposure (up to 1 week cumulative) to ambient temperature possible.

**Shelf Life:** 12 months after date of delivery**Molecular Formula:** C<sub>10</sub>H<sub>18</sub>N<sub>3</sub>O<sub>13</sub>P<sub>3</sub> (free acid)**Molecular Weight:** 481.18 g/mol (free acid)**Exact Mass:** 481.01 g/mol (free acid)**CAS#:** 101553-55-3**Purity:**  $\geq$  95 % (HPLC)**Form:** solution in water**Color:** colorless to slightly yellow**Concentration:** 10 mM - 11 mM**pH:** 7.5  $\pm$  0.5**Spectroscopic Properties:**  $\lambda_{\max}$  271 nm,  $\epsilon$  9.0 L mmol<sup>-1</sup> cm<sup>-1</sup> (Tris-HCl pH 7.5)