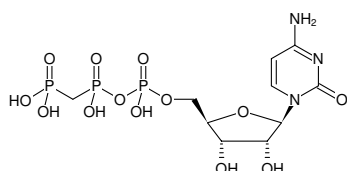


**CppCp**

(CMPPCP)

Cytidine-5'-[( $\beta,\gamma$ )-methylene]triphosphate, Sodium salt

Cat. No.	Amount
NU-254	5 mg



Structural formula of CppCp

**For research use only!****Shipping:** shipped on gel packs**Storage Conditions:** store at -20 °C

Short term exposure (up to 1 week cumulative) to ambient temperature possible.

**Shelf Life:** 12 months after date of delivery**Molecular Formula:** C<sub>10</sub>H<sub>18</sub>N<sub>3</sub>O<sub>13</sub>P<sub>3</sub> (free acid)**Molecular Weight:** 481.18 g/mol (free acid)**Exact Mass:** 481.01 g/mol (free acid)**Purity:** ≥ 95 % (HPLC)**Form:** solid**Color:** white to off-white**Spectroscopic Properties:**  $\lambda_{\max}$  271 nm,  $\epsilon$  9.0 L mmol<sup>-1</sup> cm<sup>-1</sup> (Tris-HCl pH 7.5)