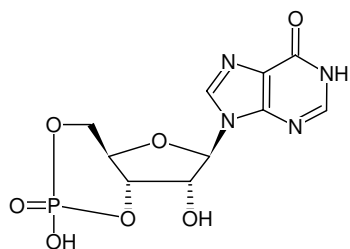


**cIMP**

Inosine-3',5'-cyclic monophosphate, Triethylammonium salt

| Cat. No. | Amount |
|----------|-------------------|
| NU-1205S | 50 µl (10 mM) |
| NU-1205L | 5 x 50 µl (10 mM) |



Structural formula of cIMP

For general laboratory use.**Shipping:** shipped on gel packs**Storage Conditions:** store at -20 °C

Short term exposure (up to 1 week cumulative) to ambient temperature possible.

Shelf Life: 12 months after date of delivery**Molecular Formula:** C₁₀H₁₁N₄O₇P (free acid)**Molecular Weight:** 330.19 g/mol (free acid)**Exact Mass:** 330.04 g/mol (free acid)**CAS#:** 41092-64-2**Purity:** ≥ 95 % (HPLC)**Form:** solution in water**Color:** colorless to slightly yellow**Concentration:** 10 mM - 11 mM**pH:** 7.5 ±0.5**Spectroscopic Properties:** λ_{max} 249 nm, ε 12.2 L mmol⁻¹ cm⁻¹ (Tris-HCl pH 7.5)**Selected References:**

Wang *et al.* (2000) RNA polymerase-cNMP-ligated cAMP receptor protein (CRP) mutant interactions in the enhancement of transcription by CRP mutants. *J. Biol. Chem.* **275** (43):33457.

Shapiro *et al.* (2000) Structural basis for ligand selectivity of heteromeric olfactory cyclic nucleotide-gated channels. *Biophys. J.* **78** (5):2307.

Sunderman *et al.* (1999) Sequence of events underlying the allosteric transition of rod cyclic nucleotide-gated channels. *J. Gen. Physiol.* **113** (5):621.

Boadu *et al.* (1997) Binding characterization of a putative cGMP transporter in the cell membrane of human erythrocytes. *Biochemistry-US* **36** (36):10954.

Celeste *et al.* (1997) Identification of Critical Determinants for Autoinhibition in the Pseudosubstrate Region of Type Ia cAMP-dependent Protein Kinase. *J. Biol. Chem.* **272** (1):379.

Foster *et al.* (1996) Biochemical properties and cellular localization of the *Drosophila* DG1 cGMP-dependent protein kinase. *J. Biol. Chem.* **271** (38):23322.

Varnum *et al.* (1996) Subunit interactions in the activation of cyclic nucleotide-gated ion channels. *Biophys. J.* **70** (6):2667.

Reale *et al.* (1994) Nucleotide regulation of a calcium-activated cation channel in the rat insulinoma cell-line, CRI-G1. *J. Membrane Biol.* **141** (2):101.

Reddy (1978) Evidence for cyclic IMP as intracellular mediator of insulin action. *Diabetes* **27**:499, Suppl. 2.

Agarwal *et al.* (1978) Effect of cyclic-GMP (cGMP) and cyclic IMP (cIMP) analogs on human platelet aggregation. *Fed. Proc.* **37** (3):546.