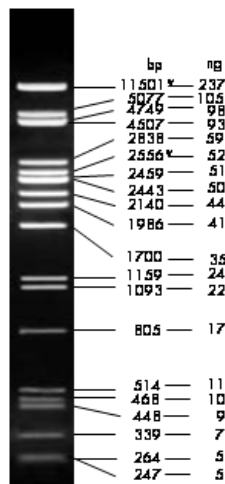




## λDNA/ PstI Digest

ready-to-use

Cat. No.	Amount
M-105S	1 ml (100 ng/μl)
M-105L	5 x 1 ml (100 ng/μl)



5 μl loaded onto 1.5 % agarose

**For *in vitro* use only!**

**Shipping:** shipped on gel packs

**Storage Conditions:** store at -20 °C

Short term storage (up to 1 month) at 4 °C possible.

**Shelf Life:** 12 months

**Form:** liquid, DNA fragment mix in 10 mM Tris-HCl pH 7.5, 10 mM EDTA, 8 % (w/v) Glycerol, Tartrazine and Xylene Cyanol FF

**Color:** green

**Concentration:** 100 ng/μl

### Description:

The PstI digest of λ DNA yields the following discrete fragments (in base pairs): 11501\*, 5077, 4749, 4507, 2838, 2556\*, 2459, 2443, 2140, 1986, 1700, 1159 1093, 805, 514, 468, 448, 339, 264, 247, 216, 211, 200, 164, 150, 94, 87, 72, 15.

The cohesive ends (12b cos site of bacteriophage) of fragments 11501 bp and 2556 bp may anneal and form an additional band. These fragments may be separated again by heating to 65 °C for 5 min and then cooling on ice for 3 min.

### Recommended Load:

5 μl per lane

### Preparation:

Lambda DNA (48.502 bp) was completely digested by PstI, phenol extracted, ethanol precipitated, dissolved in 10 mM Tris-HCl (pH 8.0) and 1 mM EDTA.