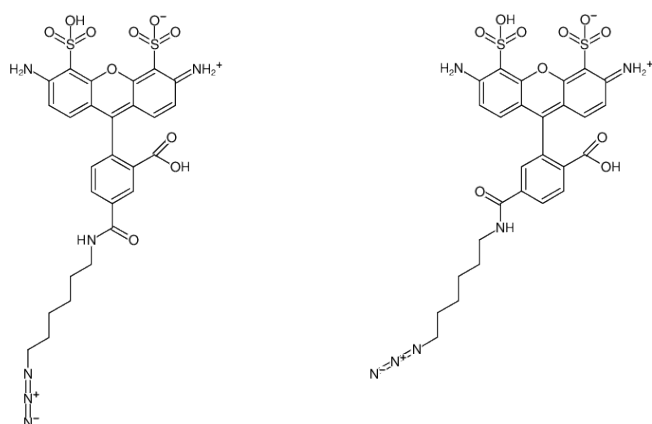




AZDye488-Azide

Abs/Em = 494/517 nm
structural analog to Alexa Fluor® 488

Cat. No.	Amount
CLK-1275-AZ-1	1 mg
CLK-1275-AZ-5	5 x 1 mg



Structural formula of AZDye488-Azide

For general laboratory use.

Shipping: shipped at ambient temperature

Storage Conditions: store at -20 °C

Shelf Life: 12 months after date of delivery

Molecular Formula: C₂₇H₂₆N₆O₁₀S₂

Molecular Weight: 658.66 g/mol

Exact Mass: 658.16 g/mol

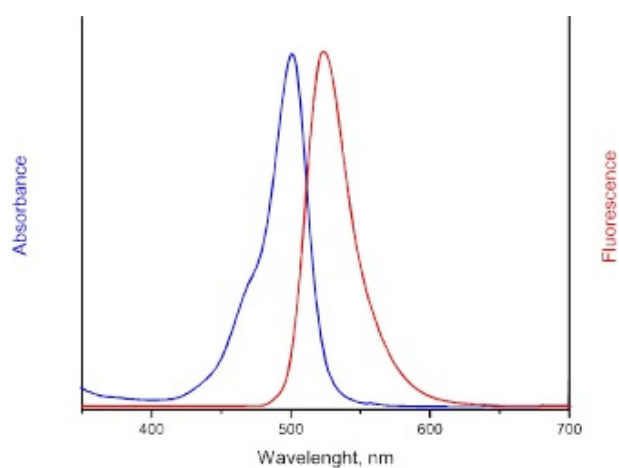
Purity: ≥ 90 % (HPLC)

Form: solid

Color: orange to red

Solubility: DMSO, DMF, MeOH

Spectroscopic Properties: λ_{exc} 494 nm, λ_{em} 517 nm, ε 73.0 L mmol⁻¹ cm⁻¹



excitation and emission spectrum of AZDye 488