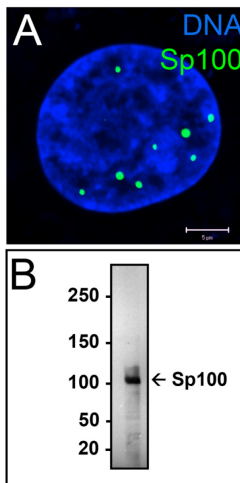


**anti-Sp100**

anti-human Sp100
rabbit, polyclonal

Cat. No.	Amount
ABD-031	50 µl

**Applications:**

Indirect Immunofluorescence, concentration: 1:1000 to 1:2000.
Western Blot, concentration: 1:500.

Description:

Polyclonal Antibody pABahSp100(209-227)#2 to human Sp100.

Specificity:

Antibody specificity was evaluated by indirect immunofluorescence and western blotting (see Figure 1A and B)

Immunogen:

The antibody binds to a peptide corresponding to amino acids 209-227 (CETEQINAKRKDTTSDKDD) of the human Sp100 protein.

Selected References:

Szostecki *et al.* (1990) Isolation and characterization of cDNA encoding a human nuclear antigen predominantly recognized by autoantibodies from patients with primary biliary cirrhosis. *J Immunol.* **145**:4338.

For in vitro use only!

Shipping: shipped on gel packs

Storage Conditions: store at -20 °C

Additional Storage Conditions: avoid freeze/thaw cycles, store in aliquots

Shelf Life: 12 months

Form: liquid (Supplied as serum)