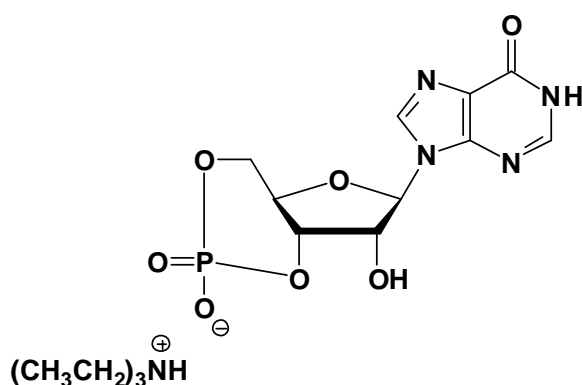


cIMP

Inosine-3',5'-cyclic monophosphate, Triethylammonium salt

Cat. No.	Amount
NU-1205S	50 Units
NU-1205L	250 Units



Cat. No.: NU-1205

Molecular Formula: $\text{C}_{10}\text{H}_{10}\text{N}_4\text{O}_7\text{P}$ (Anion)

Molecular Weight: 329.18 (Anion)

Purity: > 95%, clear aqueous solution, pH 7.5

Storage conditions:

Short term exposure (up to 1 week cumulative) to ambient temperature possible. Long term storage at $< -20^\circ\text{C}$. If stored as recommended, Jena Bioscience guarantees optimal performance of this product for 12 months after date of delivery.

For research use only!

1 unit = 1 μl of a 10 mM solution

Selected References:

Wang *et al.* (2000) RNA polymerase-cNMP-ligated cAMP receptor protein (CRP) mutant interactions in the enhancement of transcription by CRP mutants. *J. Biol. Chem.* **275** (43):33457.

Shapiro *et al.* (2000) Structural basis for ligand selectivity of heteromeric olfactory cyclic nucleotide-gated channels. *Biophys. J.* **78** (5):2307.

Sunderman *et al.* (1999) Sequence of events underlying the allosteric transition of rod cyclic nucleotide-gated channels. *J. Gen. Physiol.* **113** (5):621.

Boadu *et al.* (1997) Binding characterization of a putative cGMP transporter in the cell membrane of human erythrocytes. *Biochemistry-US* **36** (36):10954.

Celeste *et al.* (1997) Identification of Critical Determinants for Autoinhibition in the Pseudosubstrate Region of Type Ia cAMP-dependent Protein Kinase. *J. Biol. Chem.* **272** (1):379.

Foster *et al.* (1996) Biochemical properties and cellular localization of the *Drosophila* DG1 cGMP-dependent protein kinase. *J. Biol. Chem.* **271** (38):23322.

Varnum *et al.* (1996) Subunit interactions in the activation of cyclic nucleotide-gated ion channels. *Biophys. J.* **70** (6):2667.

Reale *et al.* (1994) Nucleotide regulation of a calcium-activated cation channel in the rat insulinoma cell-line, CRI-G1. *J. Membrane Biol.* **141** (2):101.

Reddy (1978) Evidence for cyclic IMP as intracellular mediator of insulin action. *Diabetes* **27**:499, Suppl. 2.

Agarwal *et al.* (1978) Effect of cyclic-GMP (cGMP) and cyclic IMP (cIMP) analogs on human platelet aggregation. *Fed. Proc.* **37** (3):546.