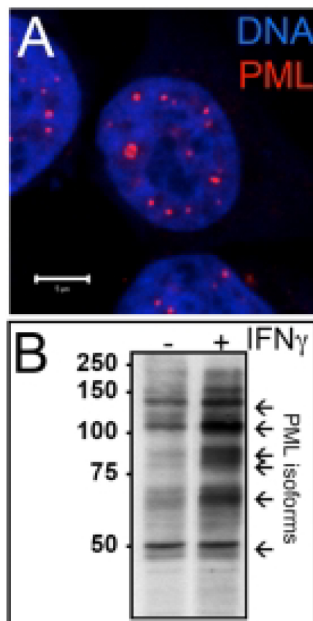


## anti-PML Peptide anti-human PML rabbit, polyclonal

Cat. No.	Amount
ABD-030	50 $\mu$ l



### Description

Polyclonal Antibody pABahPML(460-479)#3 to human PML.

### Immunogen

The antibody binds to a peptide corresponding to amino acids 460-479 (KGPSYGEDVSNNTTQKRKC) of the human PML protein. No cross reaction with mouse PML protein was observed in Western blots. The immunogen peptide sequence is not conserved in rat, chimpanzee, dog, or bovine PML proteins.

### Specificity

Antibody specificity was evaluated by indirect immunofluorescence and western blotting (see Figure 1A and B). The antibody detects all PML isoforms according to Condemine et al. (2006).

### Application

Indirect Immunofluorescence 1:1000 to 1:2000  
Western Blot 1:1000

For *in vitro* use only  
Quality guaranteed for 12 months  
Store in aliquots at -20°C.

### Avoid freeze / thaw cycles

#### Form

Liquid. Supplied as serum.

### Selected References:

Condemine *et al.* (2006) Characterization of endogenous human promyelocytic leukemia isoforms. *Cancer Res.* **66**:6192.  
Krejčí *et al.* (2008) Nuclear organization of PML bodies in leukaemic and multiple myeloma cells. *Leukemia Research* **32(12)**:1866-1877.