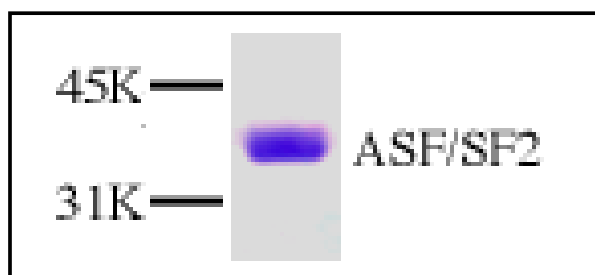


ASF/SF2 (SFRS1 or SRp30α)

Splicing Factor, Arginine/Serine-rich 1, Pre-mRNA Splicing Factor

human, recombinant, Sf9 insect cells

Cat. No.	Amount
PR-775	5 µg



For *in vitro* use only
Quality guaranteed for 12 months
Store at -80°C

Avoid freeze / thaw cycles

Form

Liquid. Supplied in 20 mM Tris-HCl, pH 8.0, 100 mM KCl, 0.2 mM EDTA, 1 mM DTT, 20% glycerol.

Activity

1 ng is sufficient for a gel mobility shift assay in a 20 µl reaction and 100 ng are sufficient for a protein-protein interaction assay.

Application

Recombinant ASF/SF2 protein can be used 1) for *in vitro* function studies including pre-mRNA splicing, cross linking and other RNA binding assays, 2) for protein-protein interaction assay, and 3) for cell growth and proliferation assays.

Molecular Weight

35 kDa

Purity

> 95% by SDS-PAGE

Description

SF or called SF2, a member of SR protein family, is an essential pre-mRNA splicing factor required for both single and alternative splicing. Phosphorylation on serine residues located within the SR domain directly regulates ASF/SF2 activity and compartmentalization of other SR splicing factors. In addition to interacting with RNA and other splicing factors, such as U1-70K, U2AF and other SR proteins, ASF/SF2 also directly or indirectly interacts with HIV regulatory protein Rev, the C-terminal domain (CTD) of the largest subunit of RNA polymerase II, and numerous transcription factors, thereby suggesting a potential role of ASF/SF2 in coordinating of transcription and pre-mRNA splicing.

The human ASF/SF2 wild type protein (residues 1-248) was expressed in baculovirus system and purified by an affinity column in combination with FPLC chromatography.

Selected References:

- Ge *et al.* (1991) Primary structure of the human splicing factor ASF reveals similarities with *Drosophila* regulators. *Cell* **66**:373.
- Krainer *et al.* (1990) The essential pre-mRNA splicing factor SF2 influences 5' splice site selection by activating proximal sites. *Cell* **62**:35.
- Zahler *et al.* (1992) SR proteins: a conserved family of pre-mRNA splicing factors. *Genes & Dev.* **6**:837.
- Gui *et al.* (1994) Purification and characterization of a kinase specific for the serine- and arginine-rich pre-mRNA splicing factors. *Proc. Natl. Acad. Sci. USA* **91**:10824.
- Colwill *et al.* (1996) The Clk/Sty protein kinase phosphorylates SR splicing factors and regulates their intranuclear distribution. *EMBO J.* **15**:265.
- Tange *et al.* (1996) In vitro interaction between human immunodeficiency virus type 1 Rev protein and splicing factor ASF/SF2-associated protein, p32. *J. Biol. Chem.* **271**:10066.
- Yang *et al.* (2005) An erythroid differentiation-specific splicing switch in protein 4.1R mediated by the interaction of SF2/ASF with an exonic splicing enhancer. *Blood.* **105**:2146.