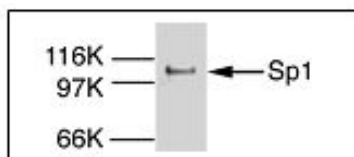


## Sp1 (HeLa) GC-box Binding Protein, Natural fraction human, HeLa

Cat. No.	Amount
PR-732	2 $\mu$ g



For *in vitro* use only  
Quality guaranteed for 12 months  
Store at -80°C

### Avoid freeze / thaw cycles

### Form

Liquid. Supplied in 20 mM Tris-HCl pH 8.0, 100 mM KCl, 0.2 mM EDTA, 1 mM DTT, 20% glycerol.

### Activity

50-100 ng are sufficient for a reconstituted transcription assay and 5-25 ng are sufficient for a gel mobility shift assay in a 20  $\mu$ l reaction.

### Molecular Weight

105 kDa

### Purity

> 95% by SDS-PAGE

### Description

Sp1 was first detected in HeLa cells on the basis of its ability to activate the SV40 early promoter transcription. Subsequently it was shown to recognize and bind selectively to a GC-rich consensus sequence (GC-box: GGGCGG or CACCC) that presents in the promoter of several important cellular genes, including SV40 early, HIV-1, PDGF-B etc. Sp1 was the first transcription factor to be cloned and characterized. Analysis of structure and function has revealed that Sp1 can be separated into discrete functional domains. The DNA binding domain consists of three zinc fingers that specifically bind to the GC-box element. Sp1 contains at least four separate transcriptional activation domains. Two of these domains are glutamine-rich, a well characterized motif found in several other transcription factors. In addition to transcription, Sp1 function has been linked to cell growth, cancer, Huntington disease, and other disorders through transcriptional regulation or specific protein-protein interactions. The function of Sp1 can be regulated by phosphorylation and glycosylation. Natural Sp1 fraction was purified from HeLa cell nuclear extract by using wheat germ agglutinin affinity chromatography.

Affinity purified Sp1 has been used for *in vitro* transcriptional activation, DNase I protection, and gel mobility shift assays.

The Sp1 fraction is 80 - 90% pure and is devoid of other transcription factors.

### Selected References:

- Dynan *et al.* (1983) The promoter-specific transcription factor Sp1 binds to upstream sequences in the SV40 early promoter. *Cell* **35**:79.
- Briggs *et al.* (1986) Purification and biochemical characterization of the promoter-specific transcription factor, Sp1. *Science* **234**:47.
- Kadonaga *et al.* (1987) Isolation of cDNA encoding transcription factor Sp1 and functional analysis of the DNA binding domain. *Cell* **51**:1079.
- Pascal *et al.* (1991) Different activation domains of Sp1 govern formation of multimers and mediate transcriptional synergism. *Genes & Dev.* **5**:1646.
- Nagaoka *et al.* (2001) Selected base sequence outside the target binding site of zinc finger protein Sp1. *Nucleic Acids Res.* **29**:4920.
- Tanaka *et al.* (1990) Differential transcriptional activation by Oct-1 and Oct-2: Interdependent activation domains induce Oct-2 phosphorylation. *Cell* **60**:375.
- Black *et al.* (2001) Sp1 and krüppel-like factor family of transcription factors in cell growth regulation and cancer. *J. Cell. Physiol.* **188**:143.
- Rafty *et al.* (2002) von Hippel-Lindau tumor suppressor protein represses platelet-derived growth factor B-chain gene expression via the Sp1 binding element in the proximal PDGF-B promoter. *J. Cell.*

## Sp1 (HeLa)

GC-box Binding Protein, Natural fraction  
human, HeLa

*Biochem.* **85**:490.

Leggett *et al.* (1995) Sp1 is phosphorylated and its DNA binding activity down-regulated upon terminal differentiation of the liver. *J. Biol. Chem.* **270**:25879.

Han *et al.* (1997) Reduced O glycosylation of Sp1 is associated with increased proteasome susceptibility. *Mol. Cell. Biol.* **17**:2550.

Jackson *et al.* (1989) Purification and analysis of RNA polymerase II transcription factors by using wheat germ agglutinin affinity chromatography. *Proc. Natl. Acad. Sci. USA* **86**:1781.

Wang *et al.* (2005) Exonuclease III protection assay with FRET probe for detecting DNA-binding proteins. *Nucleic Acids Res.* **33**:23.